

Investment Cast Stainless Steel Threaded End Fittings

CLASS 150



Covering sizes from 1/8" to 4", DIE ERSTE manufactures and supplies the highest quality investment cast stainless steel threaded end fittings. In this series, DIE ERSTE offers Class 150 threaded end fittings for low pressure applications. The main products includes elbow, tee, cross, cap, plug, nipple, bushing, union, reducer, and coupling; with several shape variations on each products to suite different situations.

DIE ERSTE threaded end fittings produced to satisfy your every demand. In addition, material can be selected among different type of stainless steels; DIE ERSTE provides ASTM A351 CF8 SS304, ASTM A351 CF8M SS316, and other material by customer request. In addition to existing dimensions and materials, DIE ERSTE is able to provide customized fittings upon request.


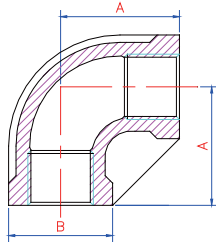

Furthermore, all of the DIE ERSTE threaded end fittings are inspected during every manufacturing stages; from raw material inspection to finished product examination with calibrated gauges. Inspection procedures and results are recorded for future reference. Before product shipment and transportation, DIE ERSTE send quality assurance engineer to inspect once again for final check.

- | | | |
|----------------------------|-------------------------|----------------------------|
| 1 90° ELBOWS BAND EQUAL | 3 HEXAGON PLUG | 5 SOCKET BANDED REDUCER |
| 1 45° ELBOWS BAND EQUAL | 3 HOSE NIPPLES | 5 HEXAGON NIPPLE REDUCER |
| 1 TEES BAND EQUAL | 3 HEXAGON NIPPLE | 5 SOCKET BANDED |
| 1 CROSSES BAND EQUAL | 3 HEXAGON BUSHING | 6 BARREL NIPPLE |
| 2 STREET ELBOWS 90° BANDED | 4 UNIONS F/F | 6 WELDING NIPPLE |
| 2 ROUND CAP | 4 SOCKET-WELDING UNIONS | 6 COUPLING (O.D. MACHINED) |
| 2 HEXAGON CAP | 4 UNION M/F | 6 HALF COUPLING |
| 2 SQUARE PLUG | 4 BUTT-WELDING UNIONS | |

Investment Cast Stainless Steel Threaded End Fittings

CLASS 150

Unit: mm

90° ELBOWS BAND EQUAL		Size	A	B		
 		1/8"	17	16		
		1/4"	18.5	19		
		3/8"	21.8	23		
		1/2"	26.5	28		
		3/4"	30	32.5		
		1"	36	40		
		1-1/4"	42.5	49.5		
		1-1/2"	47	56		
		2"	55	68.5		
		2-1/2"	68	91		
		3"	78	108		
	4"	96	137			
45° ELBOWS BAND EQUAL		Size	B	C		
 		1/8"	17.5	16		
		1/4"	21	18		
		3/8"	25.5	19		
		1/2"	30	22		
		3/4"	36.5	25		
		1"	44	29		
		1-1/4"	54	33		
		1-1/2"	61	36		
		2"	74.5	42.5		
		2-1/2"	90.5	49.5		
		3"	108	55		
	4"	136.5	66			
TEES BAND EQUAL		Size	A	B		
 		1/8"	17	16		
		1/4"	18.5	19		
		3/8"	21.8	23		
		1/2"	26.5	28		
		3/4"	30	32.5		
		1"	36	40		
		1-1/4"	42.5	49.5		
		1-1/2"	47	56		
		2"	55	68.5		
		2-1/2"	68	91		
		3"	78	108		
	4"	96	137			
CROSSES BAND EQUAL		Size	A	B		
 		1/8"	17.5	17.5		
		1/4"	20	21		
		3/8"	24	25.5		
		1/2"	28	30.2		
		3/4"	33	36.5		
		1"	38	44		
		1-1/4"	44.5	54		
		1-1/2"	49	61		
		2"	57	74.5		
		2-1/2"	68	90.5		
		3"	78	108		
	4"	96	136.5			

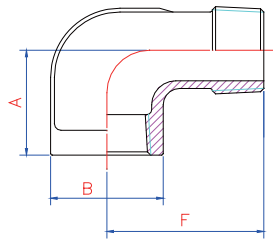
DIE ERSTE reserves the right to change product design and specifications without notice.
 © 2019 by DIE ERSTE INDUSTRY CO., LTD.

Investment Cast Stainless Steel Threaded End Fittings

CLASS 150

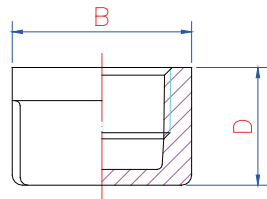
Unit: mm

STREET ELBOWS 90° BANDED



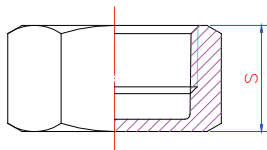
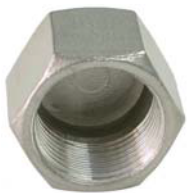
Size	A	B	F
1/8"	17.5	17.5	25.5
1/4"	20.5	21	30
3/8"	24	25.5	36.5
1/2"	28	30	40.5
3/4"	33	36.5	47.5
1"	38	44	54
1-1/4"	44	54	62
1-1/2"	49	61	68
2"	57	74.5	82
2-1/2"	68	90.5	95
3"	78	108	114
4"	96	136.5	147

ROUND CAP



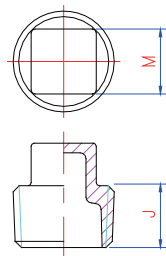
Size	B	D
1/8"	17	15
1/4"	21	17
3/8"	25.5	19.5
1/2"	30	22.5
3/4"	36.5	25
1"	44	30
1-1/4"	54	32
1-1/2"	61	34
2"	74.5	37
2-1/2"	90.5	43
3"	108	45
4"	136.5	52

HEXAGON CAP



Size	S
1/8"	15
1/4"	17.5
3/8"	20
1/2"	23.5
3/4"	26
1"	30
1-1/4"	32.5
1-1/2"	33.5
2"	37.5
2-1/2"	43.5
3"	46.5
4"	53

SQUARE PLUG

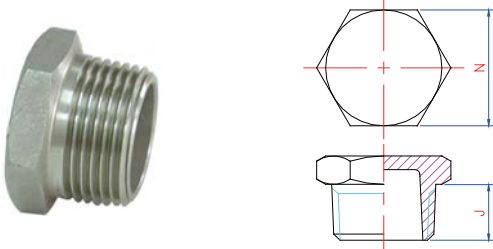
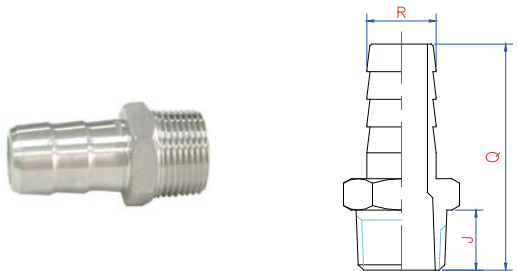
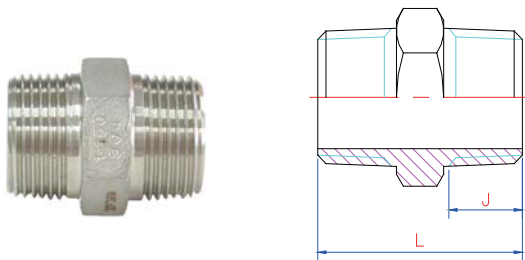
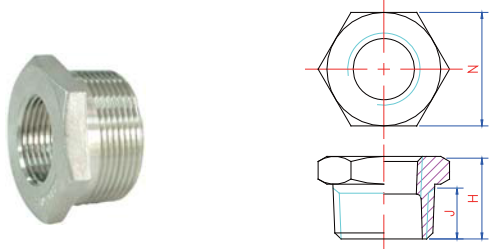


Size	M	J
1/8"	7	7
1/4"	9	9
3/8"	11	12.5
1/2"	14	12.5
3/4"	17	16
1"	18.5	19
1-1/4"	23	20
1-1/2"	24.5	20
2"	32.5	22.5
2-1/2"	38.5	30.5
3"	44	32.5
4"	54.5	38.5

Investment Cast Stainless Steel Threaded End Fittings

CLASS 150

Unit: mm

HEXAGON PLUG		Size	N	J	
		1/8"	14	8	
		1/4"	16	13	
		3/8"	19	14	
		1/2"	25	18	
		3/4"	30	20	
		1"	38	21	
		1-1/4"	45	24	
		1-1/2"	52	25	
		2"	63	26	
		2-1/2"	80	31	
		3"	89	35	
		4"	119	40	
HOSE NIPPLES		Size	Q	R	J
		1/8"	-	-	-
		1/4"	46	8.9	12
		3/8"	51	11.5	14
		1/2"	56	14	16
		3/4"	66	19.5	19
		1"	71	26	20
		1-1/4"	76	34	23
		1-1/2"	92	40	23
		2"	101	52	25
		2-1/2"	115	67	29
		3"	130	78	34
		4"	145	105	37
HEXAGON NIPPLE		Size	L	J	
		1/8"	32	11.3	
		1/4"	34.5	12.5	
		3/8"	36.5	13.5	
		1/2"	43.5	17	
		3/4"	48	19	
		1"	52	21	
		1-1/4"	57	23	
		1-1/2"	60	24	
		2"	66	27	
		2-1/2"	74	30	
		3"	83	34	
		4"	94	39	
HEXAGON BUSHING		Size	N	H	J
		1/8"	-	-	-
		1/4"	16	19	13
		3/8"	19	21.5	13.5
		1/2"	25	26	18
		3/4"	30	29	20
		1"	33	31	21
		1-1/4"	45	35	24
		1-1/2"	52	37	25
		2"	63	40	27
		2-1/2"	80	46	32
		3"	92	51	35
		4"	120	58	40

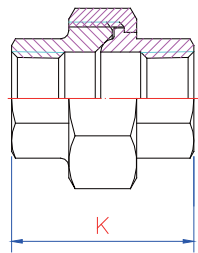
DIE ERSTE reserves the right to change product design and specifications without notice.
 © 2019 by DIE ERSTE INDUSTRY CO., LTD.

Investment Cast Stainless Steel Threaded End Fittings

CLASS 150

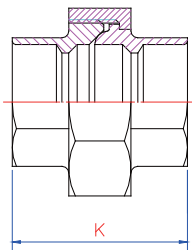
Unit: mm

UNIONS F/F



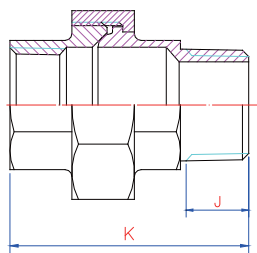
Size	K			
1/8"	32.5			
1/4"	32.5			
3/8"	38.5			
1/2"	40.5			
3/4"	43.5			
1"	49			
1-1/4"	55			
1-1/2"	60			
2"	64			
2-1/2"	75			
3"	91.5			
4"	97.5			

SOCKET-WELDING UNIONS



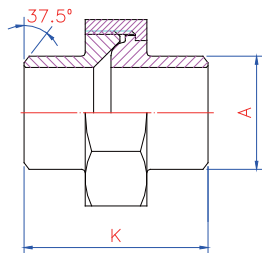
Size	K			
1/8"	32.5			
1/4"	32.5			
3/8"	38.5			
1/2"	40.5			
3/4"	43.5			
1"	49			
1-1/4"	55			
1-1/2"	60			
2"	64			
2-1/2"	75			
3"	91.5			
4"	97.5			

UNION M/F



Size	K	J		
1/8"	-	-		
1/4"	44	12		
3/8"	47	12.5		
1/2"	56	16		
3/4"	59.5	18		
1"	67.5	18		
1-1/4"	77	20		
1-1/2"	82.5	22.5		
2"	87.5	23.5		
2-1/2"	-	-		
3"	-	-		
4"	-	-		

BUTT-WELDING UNIONS



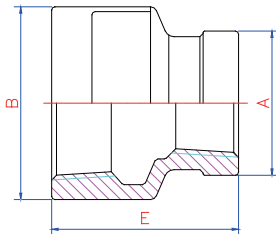
Size	K	A		
1/8"	-	-		
1/4"	36	13.5		
3/8"	38	17.2		
1/2"	40	21.3		
3/4"	43	26.9		
1"	49.5	33.7		
1-1/4"	54	42.4		
1-1/2"	58	48.3		
2"	60	60.3		
2-1/2"	-	-		
3"	-	-		
4"	-	-		

Investment Cast Stainless Steel Threaded End Fittings

CLASS 150

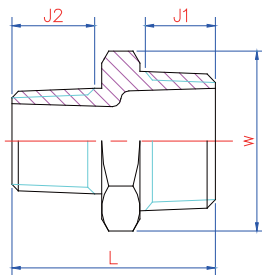
Unit: mm

SOCKET BANDED REDUCER



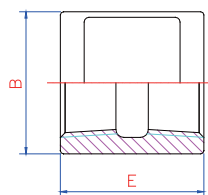
Size	A	B	E
1/4"x1/8"	17.5	21	25
3/8"x1/8"	17.5	25.5	30
3/8"x1/4"	21	25.5	30
1/2"x1/4"	21	29.5	34
1/2"x3/8"	25.5	29.5	34
3/4"x1/4"	21	36	38
3/4"x3/8"	25.5	36	38
3/4"x1/2"	29.5	36	38
1"x3/8"	25.5	44	43
1"x1/2"	29.5	44	43
1"x3/4"	36	44	43
1-1/4"x1/2"	29.5	54	53
1-1/4"x3/4"	39	54	53
1-1/4"x1"	44	54	53
1-1/2"x1/2"	29.5	61.5	60
1-1/2"x3/4"	36	61.5	60
1-1/2"x1"	44	61.5	60
1-1/2"x1-1/4"	54	61.5	60
2"x1/2"	29.5	74	67
2"x3/4"	36	74	67
2"x1"	44	74	67
2"x1-1/4"	54	74	67
2"x1-1/2"	61.5	74	67

HEXAGON NIPPLE REDUCER



Size	L	J1	J2	W
1/4"x1/8"	32.5	12.5	11	15
3/8"x1/4"	35.5	14	12.5	18.5
1/2"x1/4"	38.5	17	12.5	24
1/2"x3/8"	40	17	14	24
3/4"x1/4"	42	19.5	12.5	28.5
3/4"x3/8"	43.5	19.5	14	28.5
3/4"x1/2"	46.5	19.5	17	28.5
1"x1/2"	48	20	17	35.5
1"x3/4"	50.5	20	19.5	35.5
1-1/4"x3/4"	53.5	23	19.5	46
1-1/4"x1"	54	23	20	46
1-1/2"x1/2"	53.5	23.5	17	51
1-1/2"x3/4"	56	23.5	19.5	51
1-1/2"x1"	56.5	23.5	20	51
1-1/2"x1-1/4"	59.5	23.5	23	51
2"x1"	59.5	26.5	20	63
2"x1-1/4"	62.5	26.5	23	63
2"x1-1/2"	63	26.5	23	63


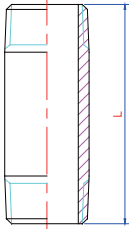

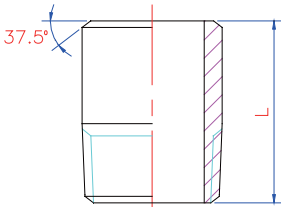

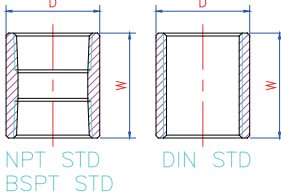

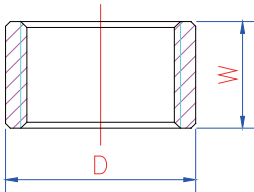
SOCKET BANDED



Size	B	E
1/8"	15	25
1/4"	21	26.5
3/8"	25	30
1/2"	30	36
3/4"	36.5	37.5
1"	43	44.5
1-1/4"	54	49.5
1-1/2"	61	54.5
2"	74.5	60.5

Investment Cast Stainless Steel Threaded End Fittings CLASS 150

Unit: mm

BARREL NIPPLE		Size	L			
 		1/8"	40			
		1/4"	40			
		3/8"	40			
		1/2"	60			
		3/4"	60			
		1"	60			
		1-1/4"	80			
		1-1/2"	80			
		2"	100			
		2-1/2"	100			
		3"	120			
		4"	120			
WELDING NIPPLE		Size	L			
 		1/8"	30			
		1/4"	30			
		3/8"	30			
		1/2"	35			
		3/4"	40			
		1"	40			
		1-1/4"	50			
		1-1/2"	50			
		2"	50			
		2-1/2"	60			
		3"	70			
		4"	80			
COUPLING (O.D. MACHINED)		Size	D	W		
 		1/8"	14	18		
		1/4"	18	25		
		3/8"	22.5	26		
		1/2"	25.5	34		
		3/4"	33	36		
		1"	40	43		
		1-1/4"	48	48		
		1-1/2"	54	48		
		2"	66	56		
		2-1/2"	84	66		
		3"	96	68		
		4"	124	84		
HALF COUPLING		Size	D	W		
 		1/8"	14	9		
		1/4"	18	12.5		
		3/8"	22.5	13		
		1/2"	25.5	17		
		3/4"	33	18		
		1"	40	21.5		
		1-1/4"	48	24		
		1-1/2"	54	24		
		2"	66	28		
		2-1/2"	84	33		
		3"	96	34		
		4"	124	42		