

Concentric Butterfly Valve to ANSI/ASME Lug Type CLASS125/CLASS150, 1½" ~ 20"

Series 81L(E)-CL125/CL150

Features

- Suitable for use in HVAC, irrigation, industrial applications where positive shutoff is required
- Single through-put shaft provides most economical pricing
- 10 position lever or gear operation
- Alloy material available on request

PMA: See Table A

TMA: See Table B

Selection:

Material of Body:
CF8M/CF8/CI/DI

Standards

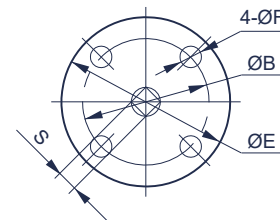
- End dimensions acc. to DIN2633
- Inspection & test acc. to EN12266

Limitation

- Do not use EPDM when hydrocarbons are present.
- Kindly anticipate increased torque for PTFE coated disc + PTFE seat option; gear operation recommended for sizes $\geq 4"$.
- End-of-line service at half rating

Options

- Double "half pin" style available for increased performance and lifecycle
- Coated disc available in: rubber, PTFE, nylon



DN40-DN500

Materials List		
NO	PARTS NAME	MATERIAL
1	BODY	CF8M / CF8 / CI / DI
2	DISC*	CF8M / CF8 / CI / DI
3	SEAT	NBR / EPDM / VITON
4	STEM	SS410
5	TAPER PIN	SS
6	BUSHING	PTFE
7	O-RING	EPDM

*Coated disc option available.
Enclosed a condensed table, for complete options, contact DIE ERSTE directly.

Dimensions (mm)

Size		H1	H2	H3	L	ØD	ØC	N-ØM	ØA	S	ØE	ØB	ØF	Weight kg
IN	DN													
1½"	40	70	110	32	35	42.4	98.5	4-1/2"-13	12.7	9	92	70	9	-
2"	50	76	162	32	45	52.9	120.5	4-5/8"-11	12.7	9	92	70	9	5.1
2½"	65	80	175	32	48	64.6	139.5	4-5/8"-11	12.7	9	92	70	9	5.4
3"	80	95	181	32	49	79.04	152.5	4-5/8"-11	12.7	9	92	70	9	5.8
4"	100	114	200	32	55	104.4	190.5	8-5/8"-11	15.8	11	92	70	9	9.2
5"	125	127	213	32	58	129.5	216	8-3/4"-10	19.05	14	92	70	9	12.8
6"	150	140	225	32	59	155.8	241.5	8-3/4"-10	19.05	14	92	70	9	13.6
8"	200	173	260	36	64	202.7	298.5	8-3/4"-10	22.2	17	125	102	11	19.5
10"	250	203	292	36	70	250.7	362	12-7/8"-9	28.6	22	125	102	11	29.7
12"	300	237	337	36	80	301.9	432	12-7/8"-9	31.8	22	150	125	13	58.2
14"	350	279	368	45	80	333.3	476	12-1"-8	31.8	22	150	125	13	81.3
16"	400	304	400	51	90	389.6	539.5	16-1"-8	33.3	22	210	165	22	129.2
18"	450	362	422	51	109	439.9	578	16-1½"-7	38	27	210	165	22	158
20"	500	368	479	64	135	491.6	635	20-1½"-7	41.15	27	210	165	22	226.6

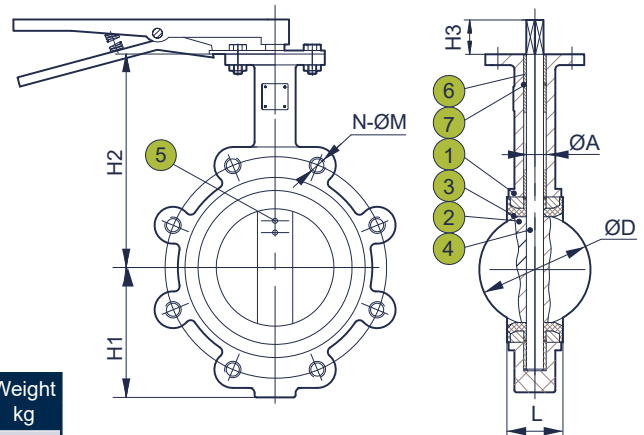


Table B: Temperature Rating

SEAT	APPLICABLE TEMPERATURE
NBR	-4°F to 176°F (-20°C to +80°C)
EPDM	-4°F to 248°F (-20°C to +120°C)
VITON	+14°F to 392°F (-10°C to +200°C)
PTFE	-4°F to 302°F (-20°C to +150°C)

Concentric Butterfly Valve to ANSI/ASME Lug Type

CLASS125/CLASS150, 24" ~ 40"

Series 81L(E)-CL125/CL150

Features

- Suitable for use in HVAC, irrigation, industrial applications where positive shutoff is required
- Single through-put shaft provides most economical pricing
- 10 position lever or gear operation
- Alloy material available on request

Standards

- End dimensions acc. to DIN2633
- Inspection & test acc. to EN12266

Limitation

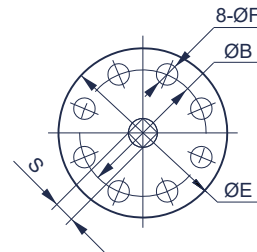
- Do not use EPDM when hydrocarbons are present.
- Kindly anticipate increased torque for PTFE coated disc + PTFE seat option; gear operation recommended for sizes $\geq 4"$.
- End-of-line service at half rating

PMA: See Table A

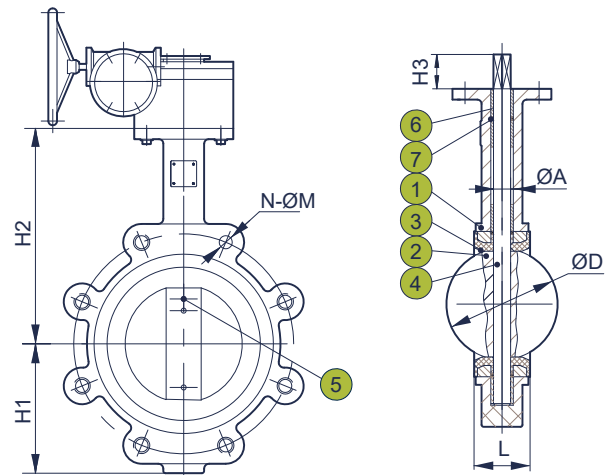
TMA: See Table B

Selection:

Material of Body:
CF8M/CF8/CI/DI



DN600-DN1000



Options

- Double "half pin" style available for increased performance and lifecycle
- Coated disc available in: rubber, PTFE, nylon

DIE ERSTE reserves the right to change product design and specifications without notice. Copyright © 2020 by DIE ERSTE INDUSTRY CO., LTD. Series 81L(E) VZ.0

Materials List		
NO	PARTS NAME	MATERIAL
1	BODY	CF8M / CF8 / CI / DI
2	DISC*	CF8M / CF8 / CI / DI
3	SEAT	NBR / EPDM / VITON
4	STEM	SS410
5	TAPER PIN	SS
6	BUSHING	PTFE
7	O-RING	EPDM

*Coated disc option available.
Enclosed a condensed table, for complete options, contact DIE ERSTE directly.

Dimensions (mm)

Size		H1	H2	H3	L	ØD	ØC	N-ØM	ØA	S	ØE	ØB	ØF	Weight kg
IN	DN													
24"	600	444	562	70	156	592.3	749.5	20-1¼"-7	50.65	36	300	254	18	315.5
28"	700	520	630	70	156	694.1	-	-	63.35	40	300	254	18	-
30"	750	621	648	72	169	744.2	914.5	28-1¼"-7	63.35	40	300	254	18	-
32"	800	590	690	72	169	794.2	-	-	63.35	40	300	254	18	-
36"	900	623	768	77	211	863.4	1086	32-1½"-6	74.25	53	300	254	18	-
40"	1000	670	850	77	211	963.4	-	-	84.2	60	300	254	18	-

Table A: Maximum Pressure Rating

SIZE	RUBBER SEAT	PTFE SEAT	PTFE SEAT+ PTFE COATED DISC
≤DN150 (6")	13.7 bar (200psi)	13.7 bar (200psi)	10.3 bar (150 psi)
DN200 (8")	13.7 bar (200psi)	10.3 bar (150 psi)	10.3 bar (150 psi)
DN250 (10")~ DN300 (12")	13.7 bar (200psi)	10.3 bar (150 psi)	6.9 bar (100 psi)
DN350 (14")~ DN600 (24")	10.3 bar (150 psi)	6.9 bar (100 psi)	6.9 bar (100 psi)
≥DN600 (24")	6.9 bar (100 psi)	-	-
Gear Operation Recommendation	≥ 300	≥ DN150	≥ 100

Table B: Temperature Rating

SEAT	APPLICABLE TEMPERATURE
NBR	-4°F to 176°F (-20°C to +80°C)
EPDM	-4°F to 248°F (-20°C to +120°C)
VITON	+14°F to 392°F (-10°C to +200°C)
PTFE	-4°F to 302°F (-20°C to +150°C)